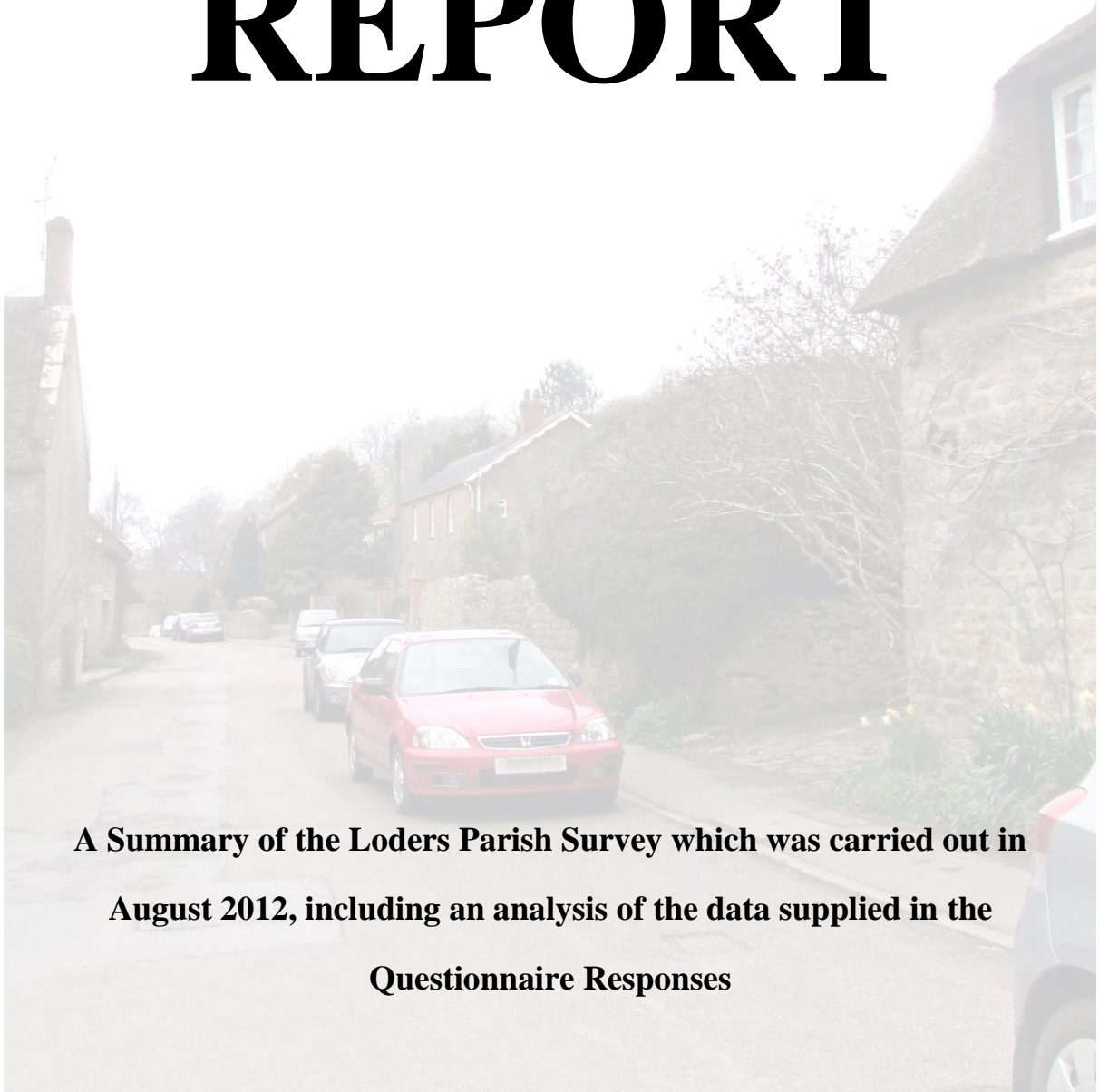


LODERS PARISH COUNCIL

LODERS PARISH SURVEY 2012

REPORT



**A Summary of the Lodders Parish Survey which was carried out in
August 2012, including an analysis of the data supplied in the
Questionnaire Responses**

FOREWORD

This Report sets out the findings of the Loders Parish Survey which was conducted last August. Response to the survey was excellent—81% of households completed and returned the questionnaire.

The purpose of the Survey was twofold:

First, to identify those issues which people in the parish consider to be priorities for action. These will form the basis for a new Parish Plan.

Second, to provide the Parish Council with evidence of villagers' views on housing and development. Under the recent Localism Act communities have been given the opportunity to influence what is built in their area in the future by drawing up a Neighbourhood Plan. Our Parish Survey data will provide the starting point for our Neighbourhood Plan.

This Report is an important step in a process which began in October 2011 with a well attended open village meeting convened by the Parish Council. Over 30 groups within the village were invited and many other villagers attended. Those present submitted lists of key local issues and concerns which were incorporated into the Survey questionnaire. A substantial number agreed to join a Steering Group and have since worked industriously, with the Parish Council, towards the ambitious goal of formulating both a Parish Plan *and* a Neighbourhood Plan.

Thanks are due to many members of our community:

- those who attended the initial meeting and generously shared their ideas
- members of the present Steering Group, whose steadfast support has led us this far: Carol and Richard Hall, Tina Cornish, Alan Watts, Barry and Barbara Wilson, Guz Tidy, Bryan Hyde, Ros Newberry, David Last.
- the 81% of households who completed the Survey questionnaire
- Members of the Parish Council

Special thanks are also due to

- Michele Harding, our efficient and hard-working clerk.
- The West Dorset District Council who have supported us with two Conservation & Community Grants

And, finally, huge thanks to our chief analyst, and author of the greater proportion of this final survey report, Richard Hall. Richard has given generously of both his time and his expertise, analysing data, ensuring reliability and accuracy. Above all, he has patiently guided the Steering Committee towards the production of this Report.

The Report makes interesting reading. I hope it will encourage you to actively join us in the next steps towards formulating our Parish Plan and our Neighbourhood plan.

Michele Warrington, Chair, Loders Parish Council

HOW TO USE THIS REPORT

There are several ways to use this report. It basically depends on how much information you want and how much time you want to spend.

For a quick review of the highlights of this report look no further than the SECTION summaries. Each SECTION is reviewed separately, so if you are only interested in one section it can be found under the same section letter as the Questionnaire.

INTRODUCTION.....	3
SECTION A and B: Household and Personal.....	5
SECTION C: Employment.....	6
SECTION D and E: Health and Social Services and Community Facilities.....	7
SECTION F: Transport and Highways	8
SECTION G: Housing and Planning.....	9
SECTION H: Communications.....	10
SECTION I: Environment.....	10
LODERS YOUNG PEOPLE’S QUESTIONNAIRE 2012.....	12

The INTRODUCTION will give you details on how the Questionnaires were handled, from the collection of the completed questionnaires to the formation of this report. It also gives the general considerations that govern the interpretation of the views expressed in this report.

APPENDIX A: RESULTS (pages A1 to A24 at the end of the report), gives the results of each and every question. However it does not discuss the results in any way. It is in the same format as the Questionnaire and the sections and the question numbers are the same. It does include a summary of the written responses to F34 and F36.

- So if you want to take a quick look at a particular point the relevant SECTION will provide it.
- If you want to put it in context the INTRODUCTION will help you.
- If you want to understand where any figure or percentage quoted in the SECTIONS came from, looking at it with the appropriate part of the RESULTS should explain them. The questionnaire number to the right of each paragraph in the SECTION indicates the relevant part of the results in APPENDIX A.

APPENDIX B: ANALYSIS describes how the results were analysed. It does this in sufficient detail to allow the analysis to be repeated, giving the equations used and any methods or techniques employed in extracting the most information from the raw basic data. For example, it includes equations used to convert the individual data into household data and it details the method by which the number of people answering a given question were found. It is very technical and in consequence it is not included in this report, but is available on request in either software or hardware format, from the Parish Council.

I expect that the people giving this last Appendix the greatest attention will be those who, in another twenty years or so, are involved when another Parish Plan is prepared. I believe it could help in the formation of a new set of questions, by seeing what use we made of the questions we asked this time. This should enable the removal of some, the rewording of others and hopefully the guidance of ones we never thought about. It could also help in improving the analysis of this new survey, by detailing how we did it this time so it can be done better.

INTRODUCTION

In July 2012 the Questionnaire was distributed to as many of the Households and Businesses of the parish as possible. The completed Questionnaires were to be anonymous and a brown envelope was provided so that each Questionnaire would be able to be confidential during the collection phase. There were no numbers printed on the Questionnaires so its identity could not be ascertained. Some questionnaires were collected whilst others were returned to members of the Council.

It was decided that the data from each questionnaire would be transferred onto a computer file. This would enable the analysis to be done quicker and easier.

Groups of thirty or so questionnaires were then given to seven people to input the data onto a spreadsheet. Each person doing this was allocated a number from 0 to 6 and on in-putting a Questionnaire allocated it a number from 01 to 30 and this three digit number was written on the top of the Questionnaire and at the head of the data in the spreadsheet. By adding a number to the Questionnaire at this time the identity of those completing the questionnaire was not known and thus confidentiality was maintained. The first person to fill in the questionnaire was called person 1. The next person was called person 2 and so on until the whole household had filled in the questionnaire. So one column held the answers of every question for one person. This person or column was identified by a unique number. The spreadsheet generated this unique number for each person by using the Questionnaire number, a full stop and then the person number.

Thus 317.4 would be the fourth person to fill in the 17th Questionnaire that the data in-putter number 3 added to the data base. The Questionnaire would have 317 written on the top right of the cover.

This meant: -

- The anonymity of the data was maintained.
- That no Questionnaire was added to the data base more than once.
- No Questionnaire was not entered.
- Any data we thought was suspect could readily be checked with the original Questionnaire.
- If the data was sorted the unique number remained attached so that the data would never lose its identity.

The Data Base contains the answers for everybody from the age of eleven upwards regardless of age or sex. Each answer carries the same weight.

At the end of the data input phase we had the answers from 404 people from 198 households.

Our Survey got responses from 379 residents (345 of 11 or above plus 34 children under 11). Compared with the 2011 Census of 518 people in Loders Parish, this is a 73% response. The number of households taking part was 184 main residences plus 14 second homes. The Electoral Role 2011 quotes the number of Residences as 228 (excluding second homes). Thus we reached 81% of the main residences. These are very high responses and we can be certain that the overall opinions that were expressed do represent those of the whole community.

Once the data was on a spreadsheet it could be organised, sorted and counted. The details of how and why this was done is detailed in APPENDIX B.

In general the data was added up along one row, this being the answers to just one response for a given question. We can then tell how many people agreed with that particular response. By finding out how many people answered all the responses to that question we have a basis for quoting the percentages. All the percentages were worked out using the number of people who answered the question. Where the question dictated a different basis for the percentage these bases are given. For example, in some case the percentages are also quoted against those that have an opinion instead of all those that answered. It should also be noted that there are many questions which allow for more than one response. This gives rise to percentages which total more than 100% for the whole question.

In other cases the data was organised so that it was relevant to the whole Household instead of an Individual. For example, it was felt that it was more important to find the number of Households which use a milkman, rather than the number of Individuals.

Also it was considered that the section dealing with Employment (SECTION C) should really only include details of those who permanently reside in the parish. We are not concerned with the employment details of those who, for example, reside in London and consequently are employed there also. The data was sorted so those who were not residents could be omitted from this section of the survey.

Finally the data was summarised, Section by Section so that the results would be more easily assimilated. The SECTIONS were written by several people and reviews the highlights from each section. They show where there is general agreement across the parish or where the numbers were unexpected or interesting. Any point or highlight of the SECTIONS can be expanded by reading them with the respective parts of APPENDIX A, RESULTS.

Again when the Parish Plan is read it may be useful to refer to the relevant sections of this report to put it into context.

The Lodders Young People's Questionnaire 2012 is included at the end of the SECTIONS. It took the format of twelve young people between 8 and 16 from the parish, responding on questionnaires or in group discussions to contribute their opinions or needs that they felt would improve their lifestyles within the village. It was conducted by Mrs T Cornish with the freedom to address whatever topics seemed relevant and it does not necessarily tie in with the rest of the Survey. The content of this Young People's Questionnaire is a summary and this is presented in its entirety with the other summaries.

General Considerations

All the percentages were worked out using the number of people who answered that particular question. This was always less than 404, which means there wasn't one question that everybody answered. Where the question dictated a different basis for the percentage these bases are given, refer to APPENDIX A, RESULTS.

How much reliance can be placed on these results?

Our Survey got responses from 404 people of 11 or above. 345 were residents of 11 or above plus 34 children. Another 36 were non residents of 11 or above and 23 people who did not answer the residency question, so in fact there would be a few more than the 379 (including children) resident responses. Compared with the 2011 Census of 518 residents in Lodders Parish, this is still a 73% response. The number of households taking part was 184 main residences plus 14 second homes. The Electoral Role 2011 quotes the number of Residences as 228 (excluding second homes). The Council Tax records show 272 housing units, the difference of 44 being second homes. Thus we reached 81% of the main residences, but fewer second homes.

These are very high responses and we can be certain that the overall opinions that were expressed do represent those of the whole community.

With any Survey of this sort just rerunning it would provide different figures. However it is important to test some of the findings to see how much reliance can be placed on the results. It may seem that different parts of the SECTIONS contradict themselves. The most obvious is the main form of transport for working residents. In SECTION C: this comes out as 87% while in SECTION F: it is 90%. However as the first comes from question C18 and the second F28 with both of them manipulated to apply to working residents, it is surprising that they are within 5% of each other. Also in SECTION G: the percentage of people wishing for no additional building development varies over four questions, from 33% in G44 down to 24% in G48. The difference of + or - 8% shows that although the four questions G44, 45, 46 and 48 were phrased in different ways there is a fairly consistent response. All this tends to indicate that the results of the Survey are true to within, say, + or - 10% .

There is however one question where the figures from two different responses are not so close. I refer to G46. Here the percentage of people who felt that Loders needed 'Affordable Housing for local people' was 62% of those who expressed an opinion. A simple definition of 'Affordable Housing' is 'Social rented housing' or 'Shared ownership housing' that is at a cost low enough for people to afford and retained for future eligible households. G46 gave these two as alternative choices, but together they only received 28%, less than half the affordable housing. This is possibly because 'Affordable housing for local people' is highly emotive. It would be difficult with any degree of certainty to say which is closer to the wishes of the parish.

With this exception I think these results truly reflect the wishes of the Parish to within, say + or – 10%. Anything less than this merely indicates that the results are too close to resolve the question.

SECTION A and B: Household and Personal

The total residential population of Loders Parish as given in the 2011 Census is 518. The 2011 Electoral Roll and Council Tax Records show that there are 228 main residences and 44 second homes in the Parish. A copy of the Parish Survey questionnaire was, as far as possible, delivered to each household last August. A total of 198 households returned completed questionnaires, representing 442 people (including 38 children who were 10 and under) and expressing the views of 404 people aged 11 and over.

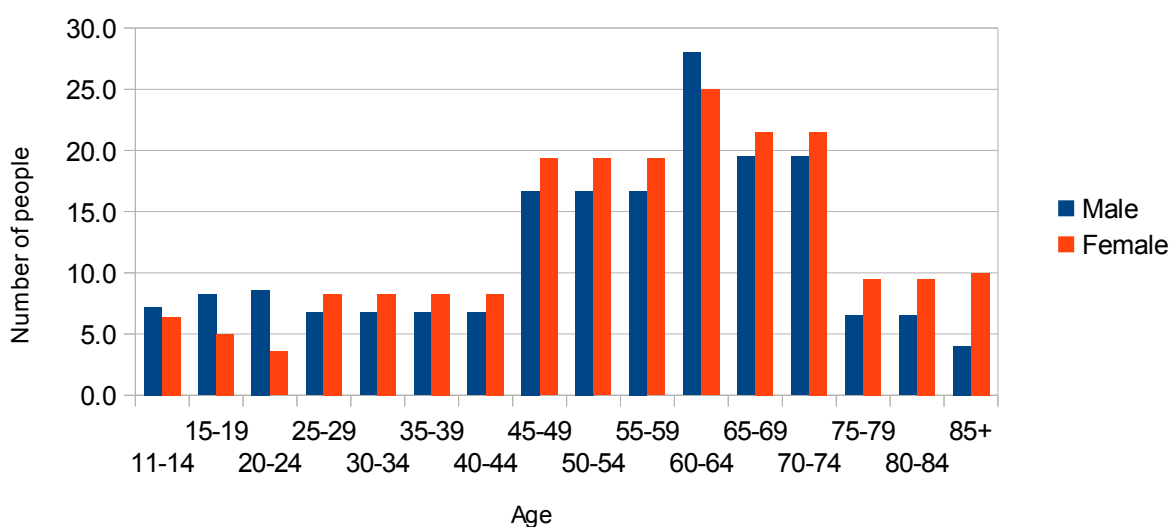
94% of the completed questionnaires represented residents and 6% represented second-home owners. The number of main residences participating was 184, 81% of those possible. 27% of second-home owners responded. The number of parish residents represented, including children, was 380, 73% of the total resident population.

A3, B11

There are 64 children under the age of 16, 14% of our population represented in our questionnaire. The adult population, (16 and over) is 86%. This adult:child ratio has changed slightly over the past 20 years since the last village Parish survey in 1991 when there were slightly fewer adults, 83% and more young people under 16, 17%.

A2

Population Distribution in 5year bands



The age range of the Parish when split by sex and normalised into 5-year bands shows a peak at 60-64. This shows no change from 1991. Villagers over 65 represent just over 27% of the population. This is a smaller proportion than in 1991 when it was 29%.

A2,B10

There are slightly more women than men in the Parish the ratio being 52:48. This is identical to the 1991 ratio.

B9

184 households (94%) said this was their main residence. A third of households, 33% (64) are fairly new to the village, having been here for 5 years or less, this represents a slight increase from the picture 20 years ago when it was 27% (54). However, households living in the village for 15 years or less have dropped considerably from 69% (131) in 1991 to 58% (113). Instead, we now have a significantly greater number of households, 43% (83), living in the village for 16 years or more. This figure was only 31% (60) in 1991. The number of second homes in the parish is currently 44. In 1991 there were 37

A3, A4

There are 328 cars in the Parish with only 14 Households (7%) without any cars. The average number of cars per Household is 1.7.

A5

Only 12 Households (6%) have individual members who are looking for alternative accommodation, with three of them being the whole family.

A6

164 Households do not have any Renewable Energy Schemes on their premises, but 25 (14%) have PV or solar heating. The remaining types of schemes, wind turbines, heat pumps or other have been installed by less than 5 Households (3%) each. Overall 30 Households (16%) have made use of the Renewable Energy schemes.

A8

SECTION C: Employment

Of the 338 residents of the village 65% (221 people) are of working age (16 to 64) and of these 78% (173 people) are employed or self employed on a full or part time basis with the remainder being in education, unwaged, unemployed, retired or Registered Disabled. Unemployment is low at only 1.4%, three people.

C12b

The largest identified source of employment is Local Government and the public sector followed by agriculture/horticulture and the retail/service industry. The next largest areas of employment are the construction industry and tourism (hotels, catering and B & B) with similar numbers employed in manufacturing.

C13

The majority, 107 residents (67%) of those in paid employment work more than 30 hours per week with 90 people (52%) reporting that they work in Loders or the surrounding villages.

C15a, C14b

The car is their principal means of transport 185 people (87%), with the bus or bicycle being used by a very small number 9 and 7 people respectively (4% and 3%).

C18a

Most people 50 (70%) in part time work seem happy with their level of employment with a small number 18 (25%) saying they would welcome more part time work or full time work.

C16b

The greatest barrier to work was identified as the problem of transport although this was highlighted by only a very small group of 5 people (4%).

C17a

Amongst employers in the parish, none anticipated a reduction in workforce in the next 12 months but 11% anticipated an increase.

C19a

In an attempt to identify possible areas of local business growth respondents were asked to react to the suggestion of more tourism attractions, small business development, small industrial workshops and generally more employment in the parish. Whilst a small majority were in favour of more employment, in each category except small business developments, the majority was against further growth, particularly in tourism attractions although when asked what sort of tourism would be acceptable the majority voted in favour of more bed and breakfast and self-catering accommodation.

C20, C21

SECTION D and E: Health and Social Services and Community Facilities

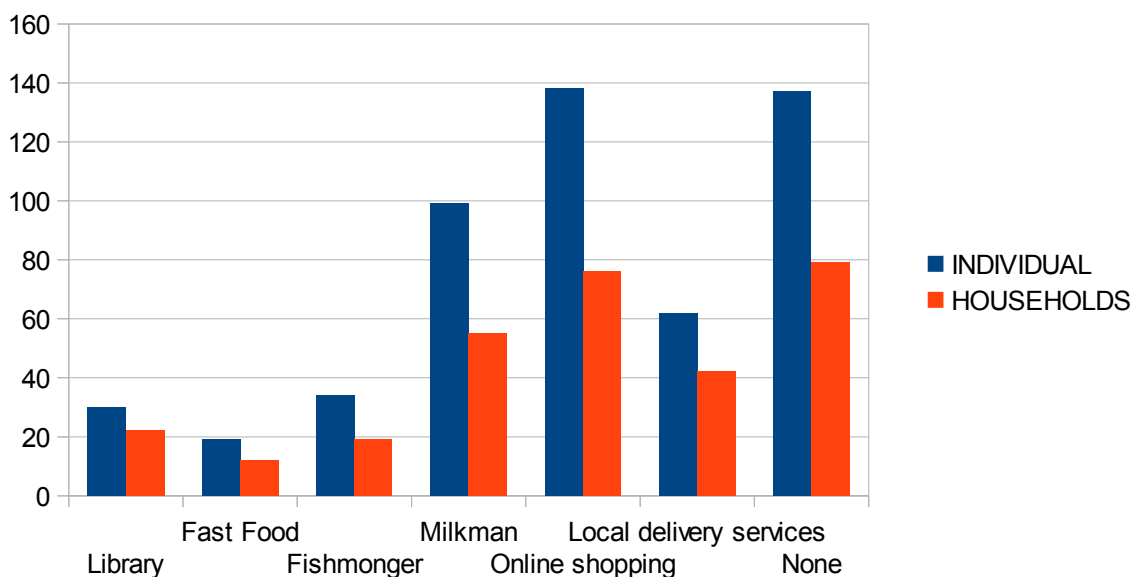
On average 339 villagers (94%) have no problems accessing medical services including doctors and hospitals. (see Appendix A for further analysis of this point)

D22

76 households (40%) shop online and surprisingly a high percentage of households 55, (29%), use the local milkman delivery. It also shows that 79 households (42%) use none of the local delivery services at all.

E24

CHART SHOWING USE OF MOBILE SERVICES



233 villagers (64%) say they would regularly support a village shop with another 111 (31%) saying “maybe” they would. This is the same level of support given in the 1991 survey, in spite of the fact that we now have such a large number of households using on-line shopping.

E25

The majority of parishioners feel that all our village amenities are important, ranging from the school and pubs at 94% each, to the skittle alley at 60%.

E26

SECTION F: Transport and Highways

The main means of travel by an overwhelming majority, 93%, is the car.

F28

There is an average of 1.7 cars per household in the parish and of those residents in employment, 90% (153 people) use their vehicles to get to work.

A5, F29b

123 parishioners (34%) occasionally experience transport difficulties but only 15 parishioners (4%) often have a problem.

F27

Whilst 163 residents (54%) use their vehicles for work the majority use is for leisure and shopping.

F29a

161 people (51%) park their vehicles in the driveway and 91 people (29%) in a garage, but the remaining 87 people (27%) park their cars on the road. A small percentage 25 people (8%) encounter real difficulties in parking.

F30, F31

Only 18 parishioners (5%) regularly use the bus service. Whilst 106 parishioners (34%) feel that no improvement is needed, 101 people (33%) feel that the route could be improved and 153 people (49%) that the timetable also needs improvement. Around 45 (14%) also consider that the bus stop location, disability access and bus shelters should be looked at.

F28 F32

89 parishioners (25%) consider the A35 junction to Uploders to be dangerous and 200 (57%) to be of a moderate danger whilst 64 parishioners (16%) do not consider the junction to be dangerous at all. 130 parishioners feel that there are major 'danger spots' on the roads in the parish and 33 people from 21 households have provided details for Loders Parish Council to consider. The majority of these refer to parking, particularly at the school.

F33 F34

When considering traffic problems in the village, speeding traffic is seen as a particular problem by 147 respondents (41%). Whilst 136 (40%) support an extension to the speed limit and 106 (31%) traffic calming measures, 152 (44%) would support neither.

F37, F36a

Lorry traffic is also seen as a problem. But 197 (55%) of parishioners consider 'on road parking' as the most significant problem. A further 5 people provided written responses suggesting a lower speed limit.

F37, F36b

Whilst 208 parishioners (59%) see the facilities for pedestrians as 'reasonable' to 'good', 118 (33%) see them as 'poor'.

F38

With regard to the maintenance of road surfaces 141 (45%) consider this to be 'not good' to 'poor' and 167 (53%) consider this to be 'good' to 'average'. The maintenance of drainage is also felt to be adequate by 184 parishioners (59%), although 128 (41%) feel that this needs more attention. The maintenance of road signage is deemed to be satisfactory by 257 (87%) and 232 (71%) feel that the maintenance of overhanging vegetation is 'average' to 'excellent'.

F39

35 parishioners (10%) state that they would use a dedicated trailway between Loders and Bridport for cycling to work and 141 (39%) would use it only occasionally. 71% of the respondents would consider using the trailway for walking and dog walking but 84 (23%) state that they would not use it at all. However only 364 people out of the possible 404 responded to this question, so the results would be slightly smaller if those that did not reply to this question had no opinion, an option that was not available.

F40

With regard to the Bridport - Maiden Newton railway route, of the 364 who answered this question, representing 90% of possible replies, 33 (9%) have no opinion, 92 (25%) feel that they need more information, 82 (23%) are opposed to the route and 160 (44%) would be in support.

F41

SECTION G: Housing and Planning

140 people (39%) would like the Parish to develop as a 'working community' and 229 (64%) felt it should stay 'as it is'. However section C shows us that it is a working community as 173 people (53%) of the 338 resident population is of working age and unemployment is 1.4%.

G42, C12b

Putting the two together gives a huge majority of 350 people (98%) who would like Loders parish to stay developing as it is, as a working community. However 'to stay as it is' could be interpreted as meaning no further development at all. But, as we will see in the following analysis, slightly less than a third felt that “to stay as it is” would mean no more housing development.

G42

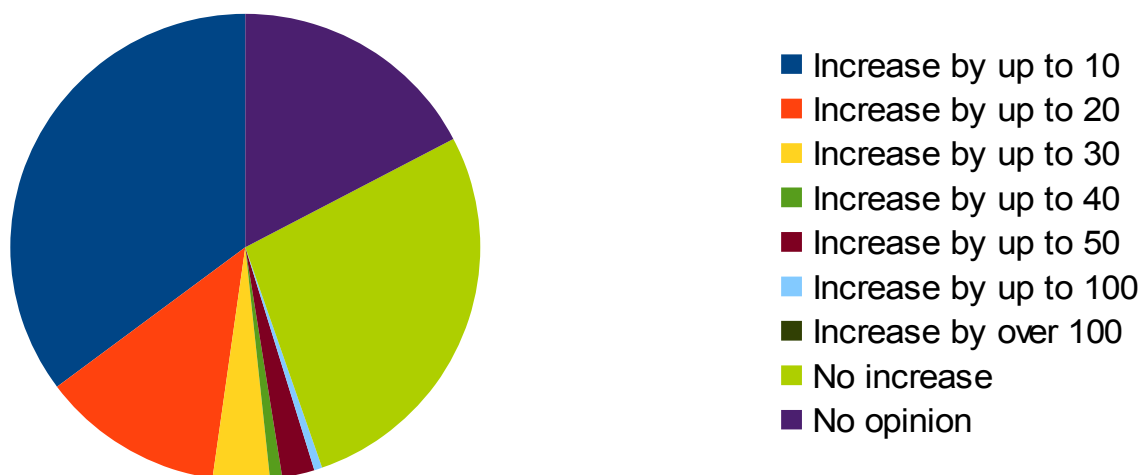
Most people 208 (71%) have been happy with the rate of housing growth in the village over recent years (10 new houses built over the last 15 years), saying it has been “about right”. A further 49 (17%) would have liked more development, and 34 (12%) would have liked less. 66 (18%) expressed no opinion.

G43

When asked to consider housing development numbers over the next 15 years, the majority of those who expressed an opinion, 126 (43%) “would like” an increase in the parish of up to 10 houses. A further 71 (24%) would like more than 10 houses over the same period, although most of these wanted the increases to be limited to no more than 20 houses. A substantial proportion, 98 people (33%) wanted no increase in housing in the future.

G44

HOW THE PARISH WOULD LIKE HOUSING TO INCREASE OVER THE NEXT 15 YEARS



Parishioners views as to the kind of additional housing showed a clear majority of 219 people (66%) in favour of small dwellings: small family homes 44%, starter homes 43%, homes to retire 20%, and for single people 10%. Only 30 people (9%) wanted large or executive homes. 106 (32%) wanted no further homes.

G45

Affordable housing for locals was felt to be the biggest need for future housing development by 169 of those who expressed an opinion (62%). On further analysis of responses, the numbers supporting the main forms of affordable housing i.e. housing associated rented and shared ownership, 76 people (28%) is almost the same as those who supported private rented or owner occupied, 88 (32%). 65 (24%) felt that no additional housing was necessary.

G46

On the assumption that development is to take place the question of type of development and where, arises. Of the choices offered, the most acceptable type of housing development was felt to be the conversion of redundant farm buildings 199 (60%). In the absence of these the next most popular choices were for single dwellings 115 (35%) and then small groups of less than ten 102 (31%). This is a bit confusing and what it really indicates is that the most acceptable type of housing development would be those involving smaller amounts of building work i.e. the conversion of redundant farm buildings or single dwellings or small groups of less than 10. This is agreed by 248 people (74%).

G47

The clear preference for the siting of new houses was infill with 160 (53%). The fringes of the parish received 91 (30%) support. 73 (24%) felt that no additional housing was necessary.

G48

When considering the use for redundant farm buildings, 283 (86%) preferred Business use, Small Businesses, Rural Offices, Light Industry or Farm Shop, whereas any Housing use had 179 (54%) support.

G49

282 people (79%) wanted holiday homes to be charged full council tax. West Dorset District Council agree and have recently decided to introduce this in the near future.

G50

SECTION H: Communications

The Parish Survey covered a number of areas of Communication, a Village Website, a Local Information Point, Radio Reception, Mobile Phone Reception and Internet Broadband.

147 residents (36%) indicated that they would, if it were set up, use a Village Website. Encouragingly 32 people said they would be prepared to help with the setting up or maintenance of the Website.

H51, H52

147 residents (36%) would like to have a Local Information Point.

H51

Loders has a major problem with Mobile Phone, 309 people (76%) have poor or no reception, and with Radio Reception (either Digital or FM), 187 people (46%) have poor reception.

H53

It is amazing to see that a significant majority of 166 households (84%) with 318 individuals use the Internet, either for business, education, shopping or recreation.

H54b

However 136 of these individuals say they have problems with reception or reliability and 222 with speed! The same number of people (100%) are willing to pay for better reliability but only 148 (67%) for more speed.

H55, H56

SECTION I: Environment

A variety of questions relating to the environment were asked:-

In response to how important is the quality of the countryside around Loders, 361 people (98%) felt that it was 'very important' or 'important' to them, and with regards to the value of the elements of the countryside, tranquillity rated highest at 304 people (81%), closely followed by landscape features at 292 (78%), openness 264 (71%), a sense of place 233 (62%) and local identity at 224 (60%). Only 2 people did not value any of the elements of the countryside.

158, 159

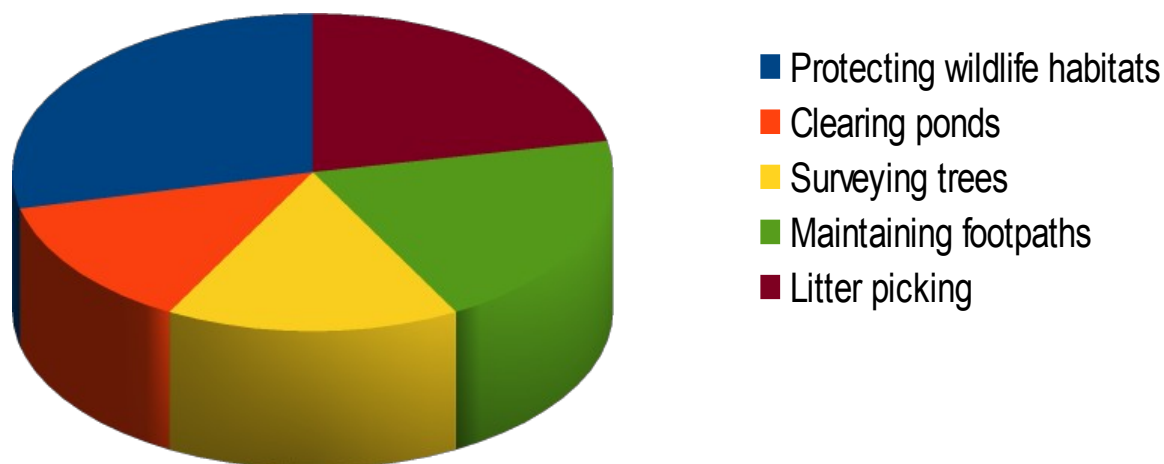
When asked to consider what might be done to protect the local environment recycling came top of the list at 201 (58%), while energy saving and improved public transport drew even at 163 (47%). More employment locally was wanted by 128 (37%) and 103 (30%) wished to reduce local traffic, whilst 96 people (28%) thought that community composting was a good idea.

160

143 people (68%) would be prepared to help to protect wildlife habitats (in the Village Appraisal of 1992 this figure was a very similar number 144), 109 (52%) would help with litter picking and 101 (48%) were willing to help maintain footpaths. Over 32% would clean ponds and survey trees.

161

PEOPLE WILLING TO HELP THE ENVIRONMENT BY : -



The general response to questions regarding disturbance showed that 190 people (57%) felt that they had no problems with any disturbance, of the rest, 61 (18%) were disturbed by traffic and noise pollution. Other forms of disturbance such as hunting, shooting, low flying aircraft, scrambling and light pollution were minimal rating between 26 and 47 people (about 11%).

162

In relation to local footpaths and bridleways, 289 people (81%) knew the local paths and 217 (72%) used them without difficulty. 204 (69%) felt that they were well signposted but 99 (34%) felt that the paths were not well signposted. 86 people (28%) used them with difficulty and 67 (19%) did not use them at all.

163

With regard to support for private renewable schemes, Sunlight (PV or heating) came out on top at 231 (72%) with heat pumps at 220 (63%) and wind turbines 112 (32%). Only 47 people (13%) were against any form of private renewable energy scheme. However there was less enthusiasm for a commercial scheme. Heat pumps were most popular with 142 (41%) and 127 (37%) would prefer to see a sunlight installation. Wind turbines had only 78 (23%) in favour and 137 (40%) were against any form of commercial renewable energy scheme.

164, 165

178 people saying they would be interested in a Parish meeting to discuss renewable energy schemes.

166

306 people (83%) felt that cables should, where possible be placed under ground, only 14 people (4%) thought that they should not.

167

312 people (84%) definitely did not want any more street lights in the parish, 38 (10%) would like to see more lighting and 25 (7%) had no opinion.

168

All the answers in this section indicate that parishioners appreciate their local environment as it is and, while not being entirely against any change would not like to see it changed visually. They also affirmed the need to preserve the peace and tranquillity of the area.

LODERS YOUNG PEOPLE'S QUESTIONNAIRE 2012

A survey conducted by Tina Cornish

A cross-section of 12 young people living in Loders/Uploders with age ranges 8-16 were asked to respond individually on questionnaires or in group discussions to contribute their opinions/needs to improving their lifestyles within the village. This took place between October and December 2012 at Loders Youth Club. This is the "unadulterated" feed back.

Travel

1. Cycle routes were important to all. Teenagers would like a safe cycle route across the fields from The Court to Bradpole Shop. Older teenagers would like to see this extended from there to the Cop and then West Bay.
2. A bus going to and from Bridport every day was suggested and popular with all.

Sports/Recreation

1. All youngsters would like to see more "organised" social games on Well Plot *{playing field}* like rounders, football and cricket nets.
2. An extended play area was also suggested.

Home/Housing

Only one request was made (from a Magna household) – he would like to see free extensions such as conservatories on homes with growing families so they did not have to be cramped or have to move out of Loders.

Environment

1. All recognised a need to be more energy efficient and it was suggested that all householders be asked to put a brick in their toilet cisterns to save water.
2. All wanted some sort of "shelter" to sit and chill and meet friends. In poor weather there is nowhere outside their own homes to meet a friend/friends.

IT/Mobile Phones/Broadband/Sky/Communications

1. All wanted better mobile phone signals.
2. Free Sky and Sky broadband was also requested.

Danger Spots

1. Teenagers reported using the wood the other side of the railway line behind High Acres for playing. They were unaware that this was private land. The open space/bank they can use is unusable for playing or even sitting on (as always overgrown). In the wood there are very dangerous “holes” and a “well” which some had fallen into.
2. The road around the Church was thought to be dangerous because “cars come round too quick”.

Favourite Areas

1. The park. *{Well Plot playing field}*
2. The Village Hall – because “there are things to do there”.

Unfavourable Areas

1. There was general consensus that the only unfavourable area was the lane leading to the park *{from New Street Lane}* which was “overgrown” and “full of poo”.

Part-time Job Prospects

1. Teenagers wanted more variety of part-time job opportunities within the village (limited work available within the pubs at present).
2. Teenagers would also like more volunteering opportunities.

Learning/Training

1. Two wanted First Aid Training (and Loders Youth Club will be providing this).
2. If there were more part-time job opportunities there would be more chance of learning employable skills (e.g. in agriculture/horticulture/gardening).

Comments

1. Better drainage of Well Plot *{playing field}* was wanted by all together with the creation of “hard surface area” for toddlers to use small vehicles/trikes, learn to ride bikes, use skateboards and scooters.
2. More social and family events to be held at the Village Hall, e.g. bingo.
3. More “sporty” activities in the Village Hall.

APPENDIX A: QUESTIONNAIRE RESULTS

This Appendix gives the results of the analysis of the Questionnaire for ALL the questions asked. If not indicated otherwise the results are for all the people that answered that particular question and the percentages quoted are based on that total.

SECTION A

Number of Questionnaires.	198
Number of people	404
Number NOT answering	6
Number Too Young	38

A1 How many people including children in your household?

	TOTAL
Total Number	448

A2 Please enter the number of people in your household in each age group?

	TOTAL
0 to 4	15
5 to 10	23
11 to 15	26
16 to 17	8
18 to 24	23
25 to 44	64
45 to 59	115
60 to 64	58
65 to 74	78
75 to 84	33
85+	14
Total number of people	457

A3 Is this dwelling the household's main residence?

	TOTAL	PERCENTAGE
Yes	184	94 %
No	12	6 %
Total answering question	196	

A4 How long have you lived at this address?

	TOTAL	PERCENTAGE
Less than a year	13	7 %
1 to 5 years	51	26 %
6 to 15 years	49	25 %
16 to 25 years	42	22 %
26 to 50 years	35	18 %
50 + years	6	3 %
Total answering question	195	

A5 How many cars are in the household?

	TOTAL	PERCENTAGE
Total	328	
Households without cars	14	7 %
Average cars per household	1.7	
Total Number of Households	198	

A6 Is any individual in your household looking for alternative accommodation?

	TOTAL	PERCENTAGE
Yes	12	6 %
No	176	94 %
Total answering question	188	

A7 If yes, who is looking for accommodation?

	TOTAL
Whole family	3
Son	5
Daughter	5
Parents	0
Other	0

A8 Does your household have any of the following Renewable Energy Schemes on your home or land?

	TOTAL	PERCENTAGE
Wind (wind Turbine)	2	1 %
Sunlight (PV or heating)	25	14 %
Heat-pump	5	3 %
Other	3	2 %
None	164	89 %
Total with energy scheme	30	16 %
Total answering question	184	

SECTION B

B9 Are you male or female?

	TOTAL	PERCENTAGE
Male	187	48 %
Female	205	52 %
Total answering question	392	

B10 What age group do you belong to?

Male Population by Age Group	TOTAL	Population in 5 year bands		
		AGE	Male	Female
11to 15	9			
16 to 17	3	11 to 14	7.2	6.4
18 to 24	12	15 to 19	8.2	5.0
25 to 44	27	20 to 24	8.6	3.6
45 to 59	50	25 to 29	6.8	8.3
60 to 64	28	30 to 34	6.8	8.3
65 to 74	39	35 to 39	6.8	8.3
75 to 84	13	40 to 44	6.8	8.3
85+	4	45 to 49	16.7	19.3
Total answering question	185	50 to 54	16.7	19.3
		55 to 59	16.7	19.3
		60 to 64	28.0	25.0
		65 to 69	7.8	8.6
		70 to 74	7.8	8.6
		75 to 79	2.6	3.8
		80 to 84	2.6	3.8
		85+	4.0	10.0
Total answering question	203			

B11 Are you permanently resident in Loders parish?

	TOTAL	PERCENTAGE
Yes	345	90 %
No	38	10 %
Total answering question	383	

SECTION C

C12a Are you at present?

	ALL		RESIDENTS	
	TOTAL	PERCENTAGE	TOTAL	PERCENTAGE
Employed Part/Full time	149	39 %	133	39 %
Unemployed	4	1 %	3	0.89 %
Self employed, employing other people	19	5 %	17	5 %
Self employed, not employing anyone	42	11 %	38	11 %
Total Employed	203	53 %	188	56 %
In a government training scheme	0	0 %	0	0 %
In full- time education	29	8 %	17	5 %
Unwaged housewife/husband	18	5 %	16	5 %
Retired	137	35 %	124	37 %
Disabled	8	2 %	8	2 %
Total answering question	386		338	

C12b Are you at present?

	RESIDENTS Working age (16 to 64)		RESIDENTS WORKING	
	TOTAL	PERCENTAGE	TOTAL	PERCENTAGE
Employed Part/Full time	123	56 %	133	71 %
Unemployed	3	1 %	0	0 %
Self employed, employing other people	17	8 %	17	9 %
Self employed, not employing anyone	33	15 %	38	20 %
Total Employed	173	78 %	188	100 %
In a government training scheme	0	0 %	0	0 %
In full- time education	6	3 %	3	2 %
Unwaged housewife/husband	11	5 %	0	0 %
Retired	23	10 %	2	1 %
Disabled	5	2 %	0	0 %
Total answering question	221		188	

C13a In what type of business are you engaged?

	ALL		RESIDENTS	
	TOTAL	PERCENTAGE	TOTAL	PERCENTAGE
Agriculture/Horticulture	25	8 %	25	8 %
Manufacturing engineering	6	2 %	6	2 %
Manufacturing other	5	2 %	5	2 %
Retail/Service industry	25	8 %	22	7 %
Financial services	4	1 %	2	1 %
Tourism Hotels-catering-B&B	12	4 %	12	4 %
Local government/Public sector	40	12 %	38	13 %
Construction	16	5 %	14	5 %
Transport/Communications	4	1 %	4	1 %
Food processing	5	2 %	4	1 %
Other	70	21 %	60	20 %
None	133	40 %	116	39 %
Total answering question	332		296	

C13b In what type of business are you engaged?

	RESIDENTS Working age		RESIDENTS WORKING	
	TOTAL	PERCENTAGE	TOTAL	PERCENTAGE
Agriculture/Horticulture	21	10 %	24	14 %
Manufacturing engineering	5	2 %	5	3 %
Manufacturing other	5	2 %	5	3 %
Retail/Service industry	20	10 %	22	12 %
Financial services	2	1 %	2	1 %
Tourism Hotels-catering-B&B	12	6 %	12	7 %
Local government/Public sector	35	17 %	36	20 %
Construction	14	7 %	14	8 %
Transport/Communications	4	2 %	4	2 %
Food processing	3	1 %	4	2 %
Other	55	26 %	58	33 %
None	34	16 %	3	2 %
Total answering question	210		177	

C14a Do you work in the Parish of Loders or surrounding villages?

	ALL		RESIDENTS	
	TOTAL	PERCENTAGE	TOTAL	PERCENTAGE
Yes	90	30 %	90	34 %
No	214	70 %	177	66 %
Total answering question	304		267	

C14b Do you work in the Parish of Loders or surrounding villages?

	RESIDENTS Working age		RESIDENTS WORKING	
	TOTAL	PERCENTAGE	TOTAL	PERCENTAGE
Yes	82	45 %	90	52 %
No	102	55 %	84	48 %
Total answering question	184		174	

C15a If you are in paid employment, how many hours do you work?

	ALL		RESIDENTS WORKING	
	TOTAL	PERCENTAGE	TOTAL	PERCENTAGE
Full time (>30 hrs/week)	119	66 %	107	67 %
Part time (15-30 hrs/week)	35	20 %	32	20 %
Part time (<15 hrs/week)	25	14 %	21	13 %
Total answering question	179		160	

C15b If you are in paid employment, how many hours do you work?

	RESIDENTS Working age		RESIDENTS WORKING	
	TOTAL	PERCENTAGE	TOTAL	PERCENTAGE
Full time (>30 hrs/week)	106	70 %	107	67 %
Part time (15-30 hrs/week)	30	20 %	31	19 %
Part time (<15 hrs/week)	15	10 %	20	13 %
Total answering question	151		158	

C16a If you work part time would you like the opportunity for more work?

	ALL		RESIDENTS WORKING	
	TOTAL	PERCENTAGE	TOTAL	PERCENTAGE
Yes- but remain part- time	14	14 %	13	14 %
Yes -work full- time	6	6 %	6	7 %
No	75	74 %	68	74 %
Don't know	6	6 %	5	5 %
Total answering question	101		92	

C16b If you work part time would you like the opportunity for more work?

	RESIDENTS Working age		RESIDENTS WORKING	
	TOTAL	PERCENTAGE	TOTAL	PERCENTAGE
Yes- but remain part- time	13	19 %	13	18 %
Yes -work full- time	6	9 %	5	7 %
No	46	68 %	50	70 %
Don't know	3	4 %	3	4 %
Total answering question	68		71	

C17a If you are seeking work, what are the barriers preventing you from taking up employment, training or study opportunities?

	ALL		RESIDENTS	
	TOTAL	PERCENTAGE	TOTAL	PERCENTAGE
Transport	5	3 %	5	4 %
Childcare	3	2 %	3	2 %
Disability	1	1 %	1	1 %
Qualifications/Skills	1	1 %	1	1 %
Other	6	4 %	6	4 %
Not applicable	135	89 %	123	88 %
Total answering question	151		139	

C17b If you are seeking work, what are the barriers preventing you from taking up employment, training or study opportunities?

	RESIDENTS Working age		RESIDENTS WORKING	
	TOTAL	PERCENTAGE	TOTAL	PERCENTAGE
Transport	5	3 %	2	1 %
Childcare	3	2 %	3	2 %
Disability	1	1 %	0	0 %
Qualifications/Skills	1	1 %	0	0 %
Other	6	4 %	3	2 %
Not applicable	63	42 %	58	42 %
Total answering question	79		66	

C18a What is or would be your main means of transport to work, train or study ?

	ALL		RESIDENTS	
	TOTAL	PERCENTAGE	TOTAL	PERCENTAGE
Car	198	85 %	185	87 %
Bicycle	9	4 %	7	3 %
Motor cycle	1	0 %	1	0 %
Bus	12	5 %	9	4 %
Taxi	5	2 %	5	2 %
Walking	21	9 %	18	8 %
Not Applicable	106	45 %	86	41 %
Total answering question	234		212	

C18b What is or would be your main means of transport to work, train or study ?

	RESIDENTS Working age		RESIDENTS WORKING	
	TOTAL	PERCENTAGE	TOTAL	PERCENTAGE
Car	150	64 %	185	87 %
Bicycle	5	2 %	7	3 %
Motor cycle	1	0 %	1	0 %
Bus	2	1 %	9	4 %
Taxi	4	2 %	5	2 %
Walking	13	6 %	18	8 %
Not Applicable	37	16 %	14	7 %
Total answering question	169		212	

C19a If you are an employer within the Parish, over the next 12 months do you anticipate that your workforce?

	ALL		RESIDENTS	
	TOTAL	PERCENTAGE	TOTAL	PERCENTAGE
Increase	10	6 %	10	7 %
Decrease	0	0 %	0	0 %
Remain the same	11	7 %	9	6 %
Not applicable	143	87 %	125	87 %
Total answering question	164		144	

C19b If you are an employer within the Parish, over the next 12 months do you anticipate that your workforce?

	RESIDENTS Working age		RESIDENTS WORKING	
	TOTAL	PERCENTAGE	TOTAL	PERCENTAGE
Increase	10	11 %	10	13 %
Decrease	0	0 %	0	0 %
Remain the same	8	9 %	7	9 %
Not applicable	70	80 %	60	78 %
Total answering question	88		77	

C20a Would you like to see more Tourism development/attractions in and around Loders?

	TOTAL	PERCENTAGE
Strongly agree	16	7 %
Slightly agree	24	10 %
Neither agree or disagree	47	20 %
Slightly disagree	27	12 %
Strongly disagree	118	51 %
Total answering question	232	

C20b Would you like to see more Small business development in and around Loders?

Strongly agree	62	27 %
Slightly agree	44	19 %
Neither agree or disagree	72	31 %
Slightly disagree	11	5 %
Strongly disagree	81	35 %

Total answering question 270

C20c Would you like to see more Small scale industrial workshops in and around Loders?

Strongly agree	25	11 %
Slightly agree	25	11 %
Neither agree or disagree	61	26 %
Slightly disagree	22	9 %
Strongly disagree	106	46 %

Total answering question 239

C20d Would you like to see more Employment in and around Loders?

Strongly agree	72	31 %
Slightly agree	35	15 %
Neither agree or disagree	72	31 %
Slightly disagree	12	5 %
Strongly disagree	82	35 %

Total answering question 273

C21 What sort of Tourism if any would be suitable for Loders?

	TOTAL	PERCENTAGE
Camping sites	94	27 %
Sites for touring caravans	44	13 %
Bed and Breakfast trade	254	74 %
Self Catering accommodation	166	48 %
Hotels	33	10 %
None	78	23 %

Total answering question 343

SECTION D

D22 Do you have any difficulty in getting to ?

	TOTAL	PERCENTAGE	Those who had difficulty in getting to either Hospital, Doctor or other Medical services	
Hospital Yes	14	4 %		
Hospital No	346	96 %	TOTAL	PERCENTAGE
Total answering question	360		21	6 %
			Difficulty in getting to all three	
Doctor Yes	16	4 %		
Doctor No	337	93 %	9	3 %
Total answering question	361		Those who had difficulty in getting to either the Hospital or the Doctor	
Other medical services Yes	15	4 %	18	5 %
Other medical services No	332	96 %		
Total answering question	347		Difficulty in getting to both	
			12	3 %

D23 Have you used any of the following services?

	TOTAL	PERCENTAGE
Village Flu clinic Yes	39	11 %
Village Flu clinic No	322	89 %
Total answering question	361	
Health Visitor Yes	14	4 %
Health Visitor No	334	96 %
Total answering question	348	
Home help Yes	3	1 %
Home help No	341	99 %
Total answering question	344	
Hospital Car service Yes	6	2 %
Hospital Car service No	341	98 %
Total answering question	347	
Meals on wheels Yes	1	0 %
Meals on wheels No	338	100 %
Total answering question	339	

SECTION E

E24 Which of the following services do you use?

	INDIVIDUALLY		HOUSEHOLDS	
	TOTAL	PERCENTAGE	TOTAL	PERCENTAGE
Library	30	8 %	22	12 %
Fast Food	19	5 %	12	6 %
Fishmonger	34	9 %	19	10 %
Milkman	99	27 %	55	29 %
Online shopping	138	38 %	76	40 %
Local delivery services	62	17 %	42	22 %
None	137	38 %	79	42 %
Total answering question	364		189	

E25 Would you regularly support a village shop?

	TOTAL	PERCENTAGE
Yes	233	64 %
No	25	7 %
Maybe	111	31 %
Total answering question	362	

E26 Are the following amenities important ?

	TOTAL	PERCENTAGE
School	339	94 %
Allotments	285	79 %
Play area	298	82 %
Playing Field	329	91 %
Village Hall	336	93 %
Pubs	341	94 %
Skittle Alley	219	60 %
Total answering question	362	

SECTION F

	ALL	RESIDENTS	WORKING RESIDENTS	WORKING EMPLOYED (NOT Self employed)
Number of Households	198	181		
Number of people	404	345	183	133

F27 Do you experience transport difficulties getting to and from Loders Parish?

	ALL		Residents	
	TOTAL	PERCENTAGE	TOTAL	PERCENTAGE
Often	15	4 %	14	4 %
Occasionally	123	34 %	105	32 %
Never	230	63 %	207	63 %
Total answering question	363		326	

F28 Which of the following is your main means of travel?

	ALL		Residents	
	TOTAL	PERCENTAGE	TOTAL	PERCENTAGE
Car	348	93 %	309	93 %
Bicycle	22	6 %	18	5 %
Motor cycle	4	1 %	4	1 %
Bus	18	5 %	16	5 %
Taxi	14	4 %	13	4 %
Walking	32	9 %	29	9 %
Total answering question	376		333	

F29a If you have access to a vehicle what do you use it for?

	ALL		Residents	
	TOTAL	PERCENTAGE	TOTAL	PERCENTAGE
Work	177	52 %	163	54 %
Leisure	297	87 %	264	87 %
Shopping	285	84 %	254	84 %
Transport to school/college	46	14 %	43	14 %
Other	63	19 %	57	19 %
Total answering question	340		304	

F29b If you have access to a vehicle what do you use it for?

	Working Residents		Employed Residents (not self employed)	
	TOTAL	PERCENTAGE	TOTAL	PERCENTAGE
Work	153	90 %	114	94 %
Leisure	152	89 %	110	91 %
Shopping	138	81 %	97	80 %
Transport to school/college	28	16 %	17	14 %
Other	25	15 %	15	12 %
Total answering question	170		121	

F30 If responsible for a vehicle where do you usually park it?

	ALL		Residents	
	TOTAL	PERCENTAGE	TOTAL	PERCENTAGE
In a garage (on this plot)	89	28 %	85	30 %
In garage elsewhere	2	1 %	2	1 %
In driveway	161	51 %	150	53 %
On the road	87	27 %	71	25 %
Total answering question	317		285	

F31 Do you frequently experience problems parking at your home?

	ALL		Residents	
	TOTAL	PERCENTAGE	TOTAL	PERCENTAGE
Nowhere to park	25	8 %	23	8 %
Car blocking entrance	23	7 %	22	8 %
Roads too narrow	15	5 %	14	5 %
Other please specify	19	6 %	17	6 %
None	261	80 %	234	80 %
Total answering question	325		293	

F32 Would you like to see any improvements in the public bus service with regards to?

	ALL		Residents	
	TOTAL	PERCENTAGE	TOTAL	PERCENTAGE
Routes	101	33 %	80	29 %
Timetable	153	49 %	134	49 %
Cost	30	10 %	23	8 %
Reliability	39	13 %	32	12 %
Bus Stop location	46	15 %	36	13 %
Bus Shelter	44	14 %	39	14 %
Disability access	39	13 %	32	12 %
None	106	34 %	98	36 %
Total answering question	310		273	

F33 How dangerous do you consider the main A35 turning into and out of Uploders.

	ALL		Residents	
	TOTAL	PERCENTAGE	TOTAL	PERCENTAGE
Very Dangerous	89	25 %	85	27 %
Moderate	200	57 %	175	55 %
Not Dangerous	64	18 %	56	18 %
Total answering question	353		316	

F34a Do you think there are any other major 'danger-spots' on the roads in Loders Parish?

	ALL		Residents	
	TOTAL	PERCENTAGE	TOTAL	PERCENTAGE
Yes	130	40 %	119	41 %
No	134	41 %	118	40 %
No opinion	64	20 %	57	19 %
Total answering question	327		293	

F34b Do you think there are any other major 'danger-spots' on the roads in Loders Parish?

If " yes" give brief details	Written responses
School Parking	11
On street parking	4
Crown Junction	5
Road between Bradpole and Loders	5
Yonderover Corner	2
A35 slip road	1
Total answering question	28

F35 Do you think speeding traffic is a problem in Loders Parish?

	ALL		Residents	
	TOTAL	PERCENTAGE	TOTAL	PERCENTAGE
Yes	173	49 %	154	50 %
No	134	38 %	117	38 %
No opinion	45	13 %	38	12 %
Total answering question	351		309	

F36a Would you support the following speed control measures in the Parish?

	ALL		Residents	
	TOTAL	PERCENTAGE	TOTAL	PERCENTAGE
Extension to speed limit	136	40 %	119	39 %
Traffic calming measures	106	31 %	100	33 %
None of the above	152	44 %	134	44 %
Total answering question	343		307	

F36b Would you support the following speed control measures in the Parish?

	Written responses
Lower Speed limit needed	5

F37 Do you think there are traffic problems in the Parish related to?

	ALL		Residents	
	TOTAL	PERCENTAGE	TOTAL	PERCENTAGE
General congestion	67	19 %	59	19 %
On road parking	197	55 %	184	58 %
Lorry traffic	90	25 %	79	25 %
Traffic speed	147	41 %	132	42 %
Farm traffic	25	7 %	25	8 %
None of the above	75	21 %	61	19 %
Total answering question	357		316	

F38 Are the facilities for pedestrians in Loders Parish?

	ALL		Residents	
	TOTAL	PERCENTAGE	TOTAL	PERCENTAGE
Good	20	6 %	20	6 %
Reasonable	188	53 %	160	51 %
Poor	118	33 %	106	34 %
No Opinion	31	9 %	28	9 %
Total answering question	326		286	
Total with an opinion	357		314	

F39a How do you rate the maintenance of Road Surface through the villages?

	TOTAL	PERCENTAGE
Poor	91	29 %
Not good	50	16 %
Average	111	35 %
Good	56	18 %
Excellent	10	3 %
Total answering question	318	

F39b How do you rate the maintenance of overhanging vegetation/ trees through the villages?

	TOTAL	PERCENTAGE
Poor	43	14 %
Not good	46	15 %
Average	97	31 %
Good	99	32 %
Excellent	24	8 %
Total answering question	309	

F39c How do you rate the maintenance of Drainage through the villages?

	TOTAL	PERCENTAGE
Poor	71	23 %
Not good	57	18 %
Average	102	33 %
Good	67	21 %
Excellent	15	5 %
Total answering question	312	

F39d How do you rate the maintenance of Signage through the villages?

	TOTAL	PERCENTAGE
Poor	19	6 %
Not good	17	6 %
Average	85	29 %
Good	118	40 %
Excellent	54	18 %
Total answering question	293	

F40 If a dedicated trailway was made between Loders and Bridport using both existing footpaths and stretches of road would you use it for?

	TOTAL	PERCENTAGE		TOTAL	PERCENTAGE
Cycling to work in Bridport	35	10 %			
Cycling to Bridport occasionally	141	39 %			
Dog walking	110	30 %	Walking and		
Horse riding	22	6 %	dog walking	258	71 %
Walking	229	63 %			
Other	12	3 %			
Not use it at all	84	23 %			
Total answering question	364				

F41 Would you support a dedicated trailway route from Bridport-Maiden Newton via Loders?

	TOTAL	PERCENTAGE		Of those who had an opinion	TOTAL	PERCENTAGE
Yes	160	44 %			160	48 %
No	82	23 %			82	25 %
Not enough information	92	25 %			92	28 %
No opinion	33	9 %				
Total answering question	364		Total with an opinion	331		

SECTION G

G42 How would you like Loders parish to develop?

	TOTAL	PERCENTAGE	TOTAL	PERCENTAGE
As a working community	140	39 %	Both Working Community or Developing as it is	98 %
As a commuter community	13	4 %		
As a tourist centre	14	4 %		
To stay as it is	229	64 %		
None of these	8	2 %		
Total answering question	358			

G43 There have been 10 houses built in Loders Parish over the last 15 years. Do you think this is?

	TOTAL	PERCENTAGE	Of those who had an opinion	
	TOTAL	PERCENTAGE	TOTAL	PERCENTAGE
About right	208	58	208	71 %
Too much new housing	34	10	34	12 %
Too little housing	49	14	49	17 %
No opinion	66	18		
Total answering question	357		Total with an opinion	291

G44 During the next 15 years would you like to see the total housing stock of the Parish?

	TOTAL	PERCENTAGE	Of those who had an opinion	
	TOTAL	PERCENTAGE	TOTAL	PERCENTAGE
Increase by up to 10	126	35 %	126	43 %
Increase by up to 20	45	13 %	45	15 %
Increase by up to 30	14	4 %	14	5 %
Increase by up to 40	3	1 %	3	1 %
Increase by up to 50	8	2 %	8	3 %
Increase by up to 100	2	1 %	2	1 %
Increase by over 100	0	0 %	0	0 %
No increase	98	27 %	98	33 %
No opinion	62	17 %		
			Those that want at least 10 but less than 20	
			170	57 %
			Those that want at least 10	
Total answering question	358		197	67 %
			Total with an opinion	296

G45 What kind of additional accommodation do you think Loders Parish needs?

	TOTAL	PERCENTAGE		
Starter homes	144	43 %	Those that wanted Smaller Homes i.e. Starter homes or Small Family homes or Homes for singles or To retire to	66 %
Large family homes	26	8 %		
Small family homes	146	44 %		
Executive homes	4	1 %		
Homes for disabled	23	7 %		
Homes for single people	34	10 %		
To retire to or downsize	68	20 %		
No further homes needed	106	32 %		
Other	7	2 %		
Total answering question	334			

G46 Is there a need for more accommodation of the following types in Loders Parish?

	TOTAL	PERCENTAGE	Of those who had an opinion	
			TOTAL	PERCENTAGE
Private/rented	37	11 %	37	14 %
Housing association rented	48	14 %	48	18 %
Owner occupied	66	19 %	66	24 %
Shared ownership	50	15 %	50	18 %
By employment (Tied)	13	4 %	13	5 %
Sheltered housing	16	5 %	16	6 %
Affordable housing for locals	169	50 %	169	62 %
Other	2	1 %	2	1 %
No need for any of these	65	19 %	65	24 %
No opinion	67	20 %		
			Those wanting Shared Ownership or Housing Association Renting	
			76	28 %
Total answering question	340		Those wanting Private Renting or Owner Occupied	
			88	32 %
			Total with an opinion 274	

G47 What type of housing development would be acceptable in Loders Parish over the next 15 years?

	TOTAL	PERCENTAGE	Those wishing for smaller amounts of building work i.e. Single dwellings or Small groups or Redundant Farm Buildings
None	76	23 %	
Single dwellings	115	35 %	
Small group(s) < 10	102	31 %	
Carefully designed >10	12	4 %	248 74 %
Redundant farm buildings	199	60 %	
In-filling	100	30 %	
Other	2	1 %	
Total answering question	333		

G48 Where would you like the buildings to be placed?

	TOTAL	PERCENTAGE	Any of the three places	
			TOTAL	PERCENTAGE
In-fill only	160	53 %	229	76 %
The fringes of the parish	91	30 %		
Elsewhere	31	10 %		
None	73	24 %		
Total answering question	302			

G49 What alternative use would you like to see for any redundant farm buildings in the Parish?

	TOTAL	PERCENTAGE	Any Business	
			TOTAL	PERCENTAGE
Small businesses	189	57 %	283	86 %
Affordable housing	159	48 %		
Market housing	40	12 %	179	54 %
Rural offices	100	30 %		
Light industry	88	27 %	95	29 %
Farm Shop	216	65 %		
Holiday accommodation	95	29 %		
Total answering question	330			

G50 Do you think second holiday home owners should be charged?

	TOTAL	PERCENTAGE
Reduced rate council tax	42	12 %
Full council tax	282	79 %
No opinion	35	10 %
Total answering question	357	

SECTION H

H51 In relation to information services do you think that Loders needs the following?

	TOTAL	PERCENTAGE
Village Website	147	36 %
Local information point	145	36 %
Other	14	3 %
Total answering question	249	
Base for percentages	404	

H52 Would you be prepared to help with setting up or maintaining a Village Website?

	TOTAL	PERCENTAGE
Yes	32	9 %
No	322	91 %
Total answering question	354	

H53 Do you have any reception difficulties with the following?

	TOTAL	PERCENTAGE
Radio/Digital FM	187	46 %
TV Aerial	70	17 %
TV Satellite	25	6 %
Mobile phone	309	76 %
Total answering question	328	
Base for percentages	404	

H54a Does your household use of internet for any/all of the following?

INDIVIDUAL RESPONSES

	Of everybody who was asked		Of those who had an opinion	
	TOTAL	PERCENTAGE	TOTAL	PERCENTAGE
Business	122	30 %	122	34 %
Educational	172	43 %	172	48 %
Recreational	296	73 %	296	82 %
E24 Online shopping	138	34 %	138	38 %
		0		
Total using the Internet	318	79 %	318	88 %
		0		
Not at all	40	10 %	40	11 %
Would never consider	10	2 %	10	3 %
Total not use nor ever would	44	11 %	44	12 %
Total asked Question	404		Total with an opinion	362

H54b Does your household use of internet for any/all of the following?

HOUSEHOLD RESPONSES

	Of every Household asked		Of Households that replied	
	TOTAL	PERCENTAGE	TOTAL	PERCENTAGE
Business	84	42 %	84	44 %
Educational	95	48 %	95	50 %
Recreational	158	80 %	158	83 %
E24 Online shopping	76	38 %	76	40 %
Total using the Internet	166	84 %	166	87 %
Not at all	27	14 %	27	14 %
Would never consider	8	4 %	8	4 %
Total not use nor ever would	25	13 %	25	13 %
Total asked Question	198		Total with an opinion	191

H55 Do you experience problems with broadband with regard to?

	Of those answering		Of those who had an opinion	
	TOTAL	PERCENTAGE	TOTAL	PERCENTAGE
Reliability	117	35 %	117	38 %
Speed	222	66 %	222	73 %
Reception	61	18 %	61	20 %
Total having difficulty with reliability or reception	136	40 %	136	45 %
Total having any difficulty	244	72 %	244	80 %
No problems	60	18 %	60	20 %
Not applicable	33	10 %		
Total answering question	337		Total with an opinion	304

H56 With reference to the internet connection are the following important to you?

	TOTAL	
Speed	242	
Reliability	279	
Total answering question	337	but as "a not important" response would be a blank, it is not possible to quote percentages

H57 With reference to the internet connection, would you be prepared to pay for better reliability, faster broadband?

	TOTAL	
Speed	148	
Reliability	136	
Total answering question	177	but as "a not prepared to pay" response would be a blank, it is not possible to quote percentages

SECTION I

I58 How important is the quality of the countryside around Loders to you?

	TOTAL	PERCENTAGE	Of those who had an opinion	
			TOTAL	PERCENTAGE
Very important	325	87 %	325	88 %
Important	36	10 %	36	10 %
Not very important	8	2 %	8	2 %
No opinion	6	2 %		
Total answering question	374		Total with an opinion	369

I59 Which elements of the countryside around Loders Parish do you value?

	TOTAL	PERCENTAGE
A sense of place	233	62 %
Local identity	224	60 %
Tranquillity	304	81 %
Openness	264	71 %
Local landscape features	292	78 %
None	2	1 %
Total answering question	374	

I60 What do you think could be done to enhance and protect the local environment?

	TOTAL	PERCENTAGE
Recycling	201	58 %
Energy Saving	163	47 %
Improved public transport	163	47 %
Community Composting	96	28 %
Car Sharing	70	20 %
More employment locally	128	37 %
Reduce traffic	103	30 %
Nothing	33	10 %
Other	11	3 %
Total answering question	345	

I61 Would you be prepared to help with any of the following?

	TOTAL	PERCENTAGE
Protecting wildlife habitats	143	68 %
Clearing ponds	67	32 %
Surveying trees	79	37 %
Maintaining footpaths	101	48 %
Litter picking	109	52 %
Total answering question	211	

I62 Are there any types of disturbance that affect you?

	TOTAL	PERCENTAGE
Traffic Pollution	62	19 %
Hunting/ shooting	26	8 %
Low flying aircraft	33	10 %
Scrambling	39	12 %
Noise pollution	61	18 %
Light pollution	47	14 %
None	190	57 %
Total of Any Disturbance	133	40 %
Total answering question	332	

I63 In relation to local footpaths and bridleways can you answer the following?

	TOTAL	PERCENTAGE
Do you know where the local paths are?		
Yes	289	81 %
No	67	19 %
Total answering question	356	
Can you use them without difficulty?		
Yes	217	72 %
No	86	28 %
Total answering question	303	
Are they well signposted?		
Yes	204	69 %
No	99	34 %
Total answering question	295	

I64 Which Private or Domestic Renewable Energy Scheme would you consider acceptable in the Parish?

	TOTAL	PERCENTAGE
Wind (wind turbine)	112	32 %
Sunlight (PV or heating)	231	66 %
Heat-pump	220	63 %
Other	16	5 %
None	47	13 %
Total answering question	352	

I65 Which Commercial (larger scale) Renewable Energy Scheme would you consider acceptable in the Parish?

	TOTAL	PERCENTAGE
Wind (wind Turbine)	78	23 %
Sunlight (PV or heating)	127	37 %
Heat-pump	142	41 %
Other	17	5 %
None	137	40 %
Total answering question	346	

I66 Would you be interested in attending a parish meeting where Renewable Schemes would be explained and discussed?

	TOTAL	PERCENTAGE
Yes	176	50 %
No	179	51 %
Total answering question	353	

I67 Do you feel that, where possible cables should be placed safely underground?

	TOTAL	PERCENTAGE
Yes	306	83 %
No	14	4 %
No opinion	49	13 %
Total answering question	367	

I68 Would you like to see more street lights though the parish?

	TOTAL	PERCENTAGE
Yes	38	10 %
No	312	84 %
No opinion	25	7 %
Total answering question	373	