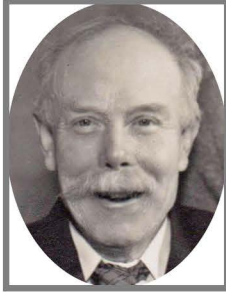


## Shatcombe House

(Right) Miss Stroud and her niece, Sarah Platt, outside the front door of Shatcombe House, (5 Shatcombe) where they lived.

During improvement works in 1994 the name Crabb 1898 was found inscribed on one of the roof timbers. Mr Ted Crabb (left) was the village carpenter and the date was, presumably, when the house was built. The



layout and appearance of the houses at Shatcombe is similar to those east of the school in Loders and those at Newfoundland, Bradpole. It is very likely they were the work of the same architect or built by the same builder, or perhaps both? The stone for this house, like many others in Loders, most likely came from the limestone quarry at Stoney Head.



Below is an extract from the Bridport News in December 1926. Mrs E.L. Hawker was my grandmother Emily Louisa Hawker. She purchased Shatcombe House on 22 December 1926 for £440. The wage for a working man then was about 40 shillings (£2) a week. The price paid was just over four times the annual earnings and although compared with today, appears to be a good deal the disposable income in 1920s would have been far less than it is today.

**The concluding sale was that of some Loders property, lot one consisting of a detached double fronted residence, known as Shatcombe House, was sold to Mrs. E. L. Hawker at £440. The second lot, containing a semi-detached freehold residence at Loders, was purchased by Mr. Sidney Hugh Marsh, of Loders, for £410. The same gentleman purchased lots 3 and 4 (three cottages, and a well-stocked orchard respectively) for £500 (maiden bid), and £80 respectively. Messrs. Roper and Roper, Bridport were the solicitors.**



The name Shatcombe is derived from an old English word meaning a valley where sheep are kept; a clue to how it was many centuries ago. (Above) The occupants outside the terrace of three houses on a sunny summer day in 1899, less than ten years after they were built. The Tithe Map of 1846 shows two houses on the site. In 1880 one of them, owned by John Marsh, included a bake house, a shop with a stable, outbuildings and an acre of orchard. The two houses were replaced by this terrace of three c1890. Shatcombe House followed in 1898.

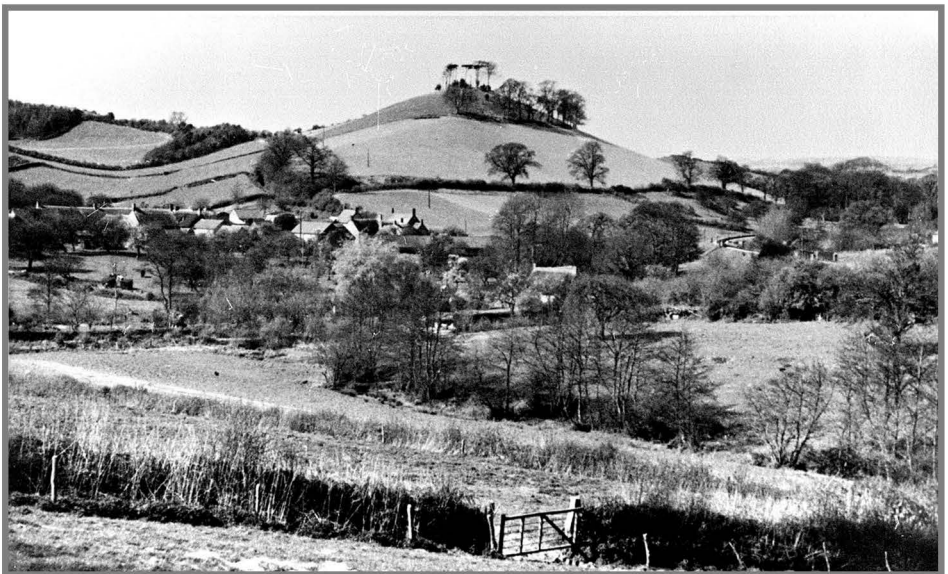


In 1900 the lean-to adjoining no. 3 was demolished and 4 Shatcome built. In 2020 a few of the old outbuildings associated with the pre-1890 houses still remained.

## Yondover



Loders from Uploders taken across the road on the way to Yondover. The Ex-Servicemen's Hut is on the left, the Old Mill and the New Street Lane railway bridge are on the right. Lower Loders is in the distance.



Yondover looking south-westwards across New Street Lane and the Asker with distinctive conical shape of Boarsbarrow Hill in the distance. The cluster of buildings were, at one time, mostly associated with the local farms.



## The Ex-Servicemen's Hut



The corrugated iron Ex-Servicemen's Hut was built at Yondover in 1926 by voluntary labour under the supervision of Mr F Fooks builder and son of the Headmaster of Loders School. Sir Edward Le Breton of Loders Court donated the land on which the hut was built. (Left) Mr Fooks(?) standing in the newly completed timber framework.

Initially it housed a skittle alley and games room. However, it soon became the centre of village activity with dances, socials, whist drives and concerts. It was also the regular meeting place for the Parish Council, the Women's Institute, the Mothers Union, the Youth Club, the Askerswell Young Farmers.

The Ex-Servicemen's Club closed in 1959 and the Hut was given to the village and renamed The Village Hall. But to many of the village people it fondly remained 'The Hut'. In 1972, the old Parish Room in New Road next to the Crown was sold for £3,750. The money raised was used to improve the Village Hall. The recently provided public sewer enabled modern flush toilets to be provided. The kitchen was modernised, as well as improved heating and lighting.

The two pictures on the next page were taken towards the end of the 1990s about the time I was the Parish Clerk. In hot weather the hut could get like an oven, in cold weather like a fridge! Before Parish Council meetings on cold winter evenings I arrived early to set up the room and pop a handful of 50p pieces into the electricity meter and turn on the wall mounted electric fan heaters. At the meetings everyone went suitably wrapped up but one of the Councillors, mindful of the likely temperature, would arrive with a hot water bottle as well as several layers of clothing. On the plus side, the discomfort concentrated the mind so the meetings tended to be short and to the point!

In 2000, after much hard work from John Hyde, Jessie Barrett and their team of willing helpers, a successful Lottery Grant application and much fund raising provided the money for our lovely new village hall on a different site on land generously given by Lord Hood of Loders Court.

When the Hut was replaced by the new Village Hall it had undoubtedly outlived its useful life but, for over 70 years, it had provided a friendly meeting place for the village and its many organisations, activities and events. Its demolition was viewed with just a little sadness. To me it was, and always will be, the Hut.

## The Ex-Servicemen's Hut - Later The Village Hall

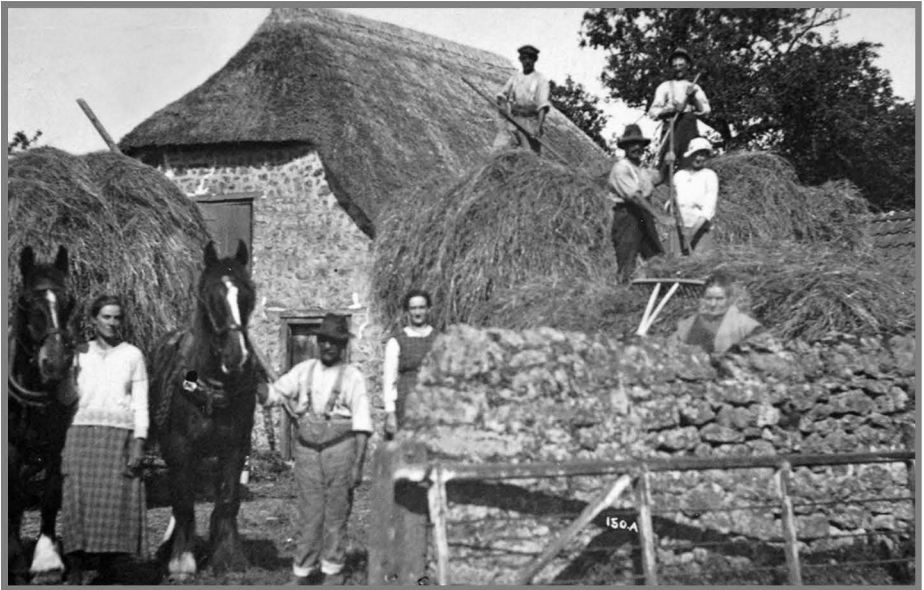


These two pictures were taken in about 1998 towards the end of the life of the old Hut. At this time it was painted green; before that it was brown which was probably its original colour.



The interior of the Hut looking from the kitchen and stage end towards the entrance. Inside the front door was a short passageway with ladies' and gents' toilets to left and right respectively.

## Higher Yondover Farm



The Hansford family and helpers haymaking in the 1920s. The grass was cut in the fields, turned to dry, gathered loose as hay and built in to hayricks. The hay provided food for the cattle during the winter months. Ellen (Nelly) Hansford is holding the horse, Kate and Sarah Hansford are standing by the wall and Florence Hansford (twin of Ellen) is on the hayrick wearing the white hat.



On the right is Higher Yondover Farm thought to be in the 1950s when George Randall was the tenant farmer. Once again, a hayrick was under construction.

## Yondover



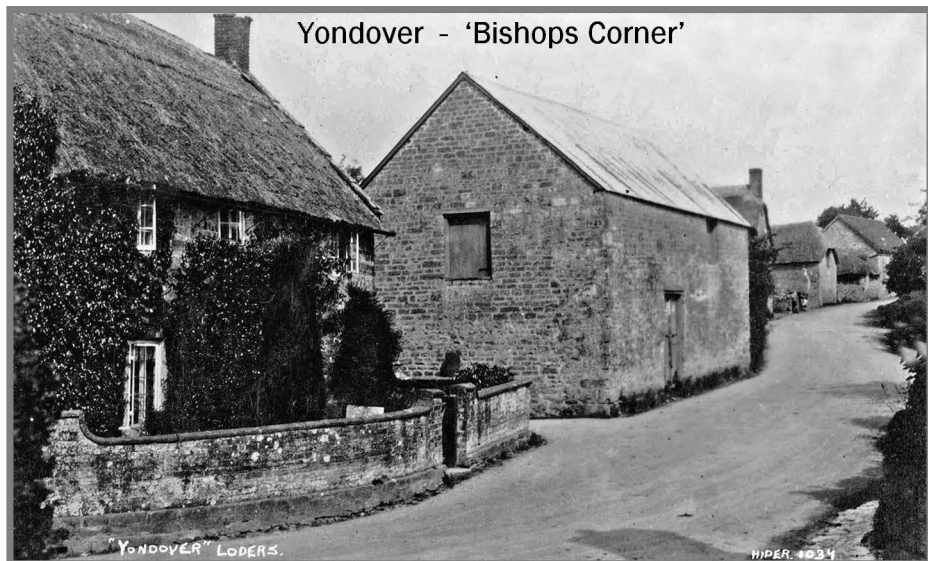
Martha Crabb, wife of John Crabb, with her children Hilda (Sis), David and Wilfred outside Yondover Cottages c1910. David became head gardener at Loders Court. Only their cottage had a door opening onto the road, they all do now.



(Left) Mrs Walter Bishop, the farmers wife, at the front door of Yondover Farmhouse. The house is on the inside of the sharp corner which was known locally as 'Bishop's Corner', named after the Bishops who lived on the corner.

(Left) Mr Walter Bishop, the Farmer on horseback at Yondover Farm.





Hider photograph looking from the corner eastwards. Yondover Farm and its barn are in the foreground with the farm buildings of Higher Yondover Farm in the distance. Bottom right is the stream which issues from the stone chute in the bank about 50 yards along the road. It supplied cool clear drinking water to the nearby cottages and to passers-by on hot days. Under the supervision of the County Council Road Foreman, Sid Tilley from Shatcombe, Uploders, the stream was piped in about 1960 enabling a length of the road to be slightly widened.



Potts of Bridport postcard from about 1930. Yondover Farm is on the right. Brook House, facing, with the stream in front of it is now a much larger property.



## Fire at Yondover 28 June 1921

(Taken from the Bridport News 1st July 1921.

Pictures by Potts of Bridport)

### **LODERS BARN AND COTTAGE DESTROYED IN FIRE EXCITING SCENES**

*The peaceful quietude of this little West Dorset village was suddenly disturbed on Friday evening when a fire was discovered in a barn belonging to Mr Harold Bishop. Just before 9 o'clock PC Jones and several other villagers noticed smoke issuing from the building, and they immediately hastened to the spot. A quantity of straw outside the building had become ignited, and the roof of the barn inside was in flames. A message was dispatched to Bridport summoning the Fire Brigade who lately arrived in charge of Mr HH Hounsell. In the meantime, the inhabitants worked assiduously in throwing buckets of water on the burning thatch and saturating the roof of two cottages standing within 20 yards of the barn.*



*The fire had obtained such a hold that when the Brigade arrived on the scene it was found that nothing could be done to save the barn. The combined efforts of the Brigade and the villagers were there-upon directed in preventing the fire from spreading. Sparks were flying in all directions, but fortunately no further damage was caused. The barn was completely gutted, and most of the agricultural implements that had been stored there were destroyed. The damage is roughly estimated at £350. A word of praise is due to the villagers for the splendid manner in which they worked under the direction of PC Bown and PC Jones.*

A further outbreak of fire occurred in the village on Tuesday evening, resulting in a total disruption of three cottages, the property of Mr Harold Bishop. These were situated at the rear of Mr Walbridge's farmhouse, standing in a row under one thatched roof. Early in the evening a flame was seen rising from the ridge of the roof over the centre cottage which happened to be unoccupied and within a short space of time the roof was ablaze. People quickly flocked to the scene of the conflagration and efforts were made to remove the contents of the two other cottages, occupied by Mr Crabb and Mrs Burbidge, an elderly lady.



The prompt action of Mr Walter Samways, a foreman porter on the GWR in coming to the assistance of Mrs Crabb, who lay ill, suffering from the shock experienced in the last fire, is worthy of the highest praise. Although the building was burning fiercely he managed to bring her through unscathed. In her weakened state, the fright rendered her unconscious and medical aid had to be requisitioned. Mindful of the plight of Mrs Burbidge, a labourer, Walter Hansford, entered the cottage and she, too, was helped to safety.



The fire and the crowd viewed from near Yondover Farmhouse, New House Farm is on the left. The girl with hat and pony tail near centre of photo is Netta Hine, later Taylor. The stream that once ran alongside the road is just in front of her.