

## Loders Arms to The Farmers Arms

There are a number of postcards of this short section of road. At first glance they are all very similar but they do show the changes over 50 or 60 years.



Card dating from the early 1900s published by W&E Frost, Bridport. On the left are the cottages next to the Loders Arms, now long gone. The little girl is thought to be Sarah Read. Although the street scene appears little different from today nearly all the houses behind the little girl on her side of the road have been replaced with new ones set back from the pavement.



About 30 years later taken from outside the Loders Arms (left). A couple of cars are parked on the street and the cottages next to the pub are still standing.

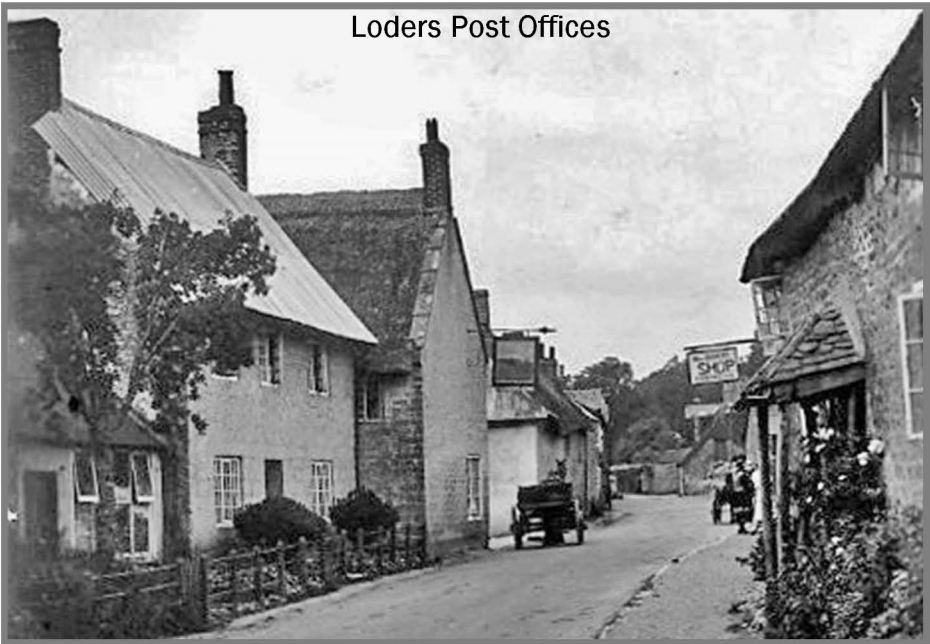


Picture taken c1930 by Claude Hider showing Mrs Budden's shop. The street appears to be surfaced, the stains on the surfacing show evidence of passing livestock, probably delivery horses that had to stand and wait. Several of the thatched roofs have a covering of corrugated iron. This was once a fairly common feature. It was cheaper than re-thatching.



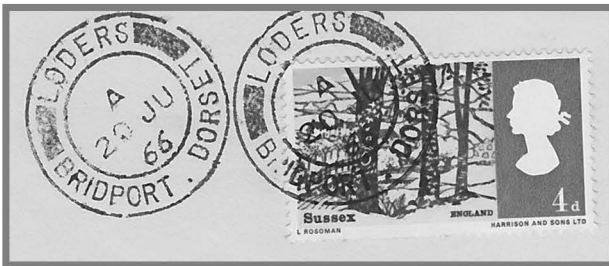
One of Claude Hider's later cards showing the shop and sign which reads 'The Old Shop, Established 1896'. The corrugated iron sheeting has been removed and replaced with pristine thatch most likely laid by Sam Legg, the village thatcher. The house boasts a new porch and electricity and the telephone have arrived so it must be 1936, or later.

## Loders Post Offices



Until the late 1930s, 27 Loders was a Post Office (PO) and Greengrocers run by the Postmistress, Mrs Budden. This has been demolished and replaced with a bungalow. In the late 1930s Mrs Wells became the Postmistress in the shop and Post Office at 38 Loders, just across the road from Number 27. The picture, above, shows the sign to Mrs Budden's PO and shop on the right. The house in the foreground (left) is 38 Loders which became the home of the Wells family. The single storey building was the Post Office and Store until 1992.

The handstamp (right) LOWER LODERS BRIDPORT, was applied to a postcard most probably by Mrs Budden, in the original Loders PO on 21 August 1911.



The cancellations (above) LODERS BRIDPORT DORSET, were applied at the Loders PO, 38 Loders, on the 29 January 1966, in all probability by Mrs May Wells, the Postmistress who is pictured right.



## The Farmers Arms

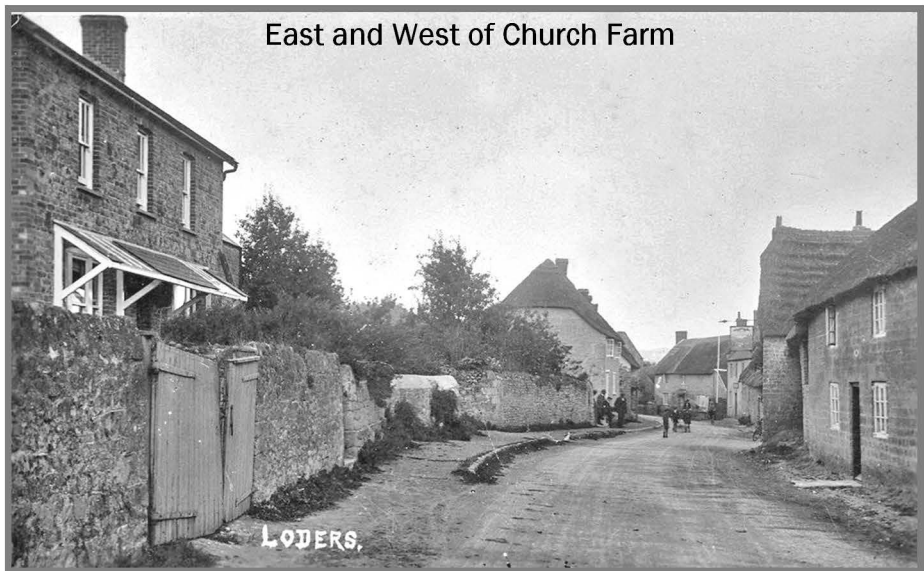
(Right) The Farmers Arms from a postcard c1910 with the Loders Arms in the distance. The landlord and landlady of the pub, Mr and Mrs Blackler, stand at the corner.



Electricity came to the village in 1936 so this must have been later, probably the 1940s. The Blackler's daughter married Mr Pitcher, who became the next landlord. The lady by the door could be Mrs Pitcher. The others look like visitors.



The Farmers Arms with the Loders Arms in the distance c1930. The cottages beside the Loders Arms are long-gone, replaced with a car park and later an outside seating area. In the distance on the left is Mr Budden's shop with its sign above and to the left of the car parked outside. The pub closed in 1975.



Photograph taken in about 1934 with Church Farm house on the left and the Lodders Arms in the distance. A group of people stand outside Mrs Budden's shop; the children quite likely include Bill and Tony Budden.



Looking west from near the Farmers Arms c1910. The building on the near left was the pony shed for the pub. It no longer exists. Where it once stood is now part of the paved area in front of the Farmers Arms. The old barn built on the inside of the corner by the church is visible to the right of the church gate. In the foreground on the right are buildings at Church Farm, which was then known as Home Farm.

## Church Farm



Ivy Crabb stands at the front of Church Farmhouse in about 1925. The sign 'Motor for Hire' on the left, refers to the cars belonging to Mr Ernest Watts, the taxi driver and car hirer who worked from the yard beside Church Farmhouse.

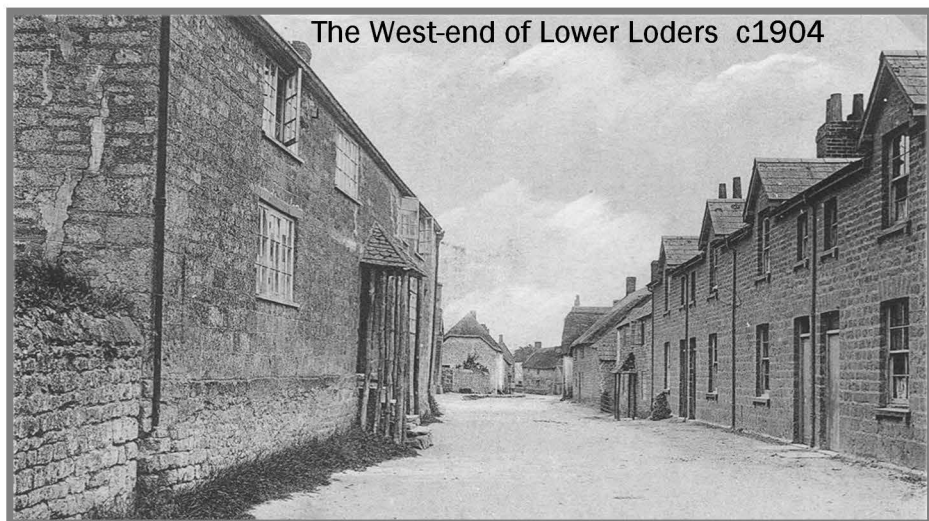
This area is now occupied by Church Farm Cottage.



Church Farm was rebuilt by Ivy Crabb's father Arthur Joseph Samways Crabb who also rebuilt the houses on that side of the road, as described on page 115. Church Farm was formerly called Home Farm, (see page 113 bottom photo showing a thatched property).

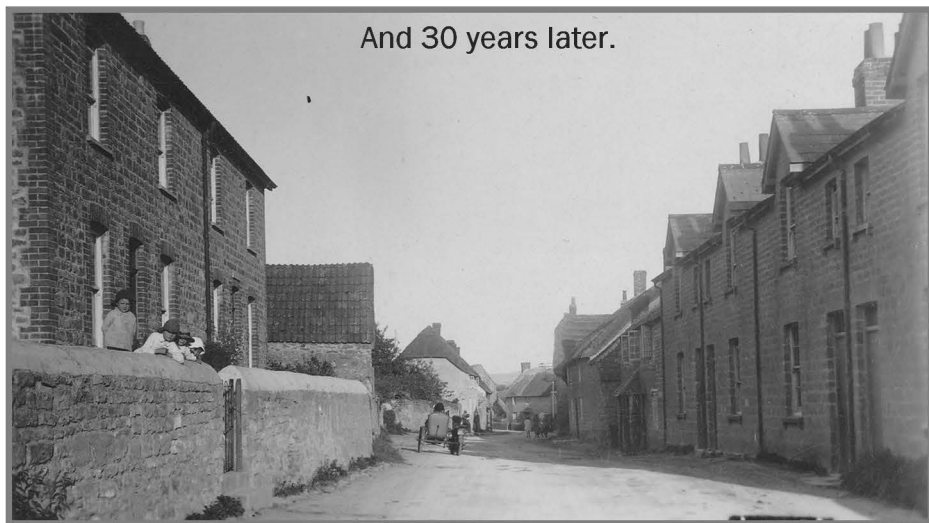
(Left) Mr Crabb outside the house also in the mid-1920s. He is dressed as a farmer and other workers did in those days. In the 1950s many still wore similar clothing, a shirt with a detachable stud collar (usually not attached), a weskit (waistcoat), heavy trousers, hobnailed boots and a trilby hat.





The West-end of Lower Loders c1904

Card posted in 1905. The houses on the south, right-hand, side remain largely unchanged to this day. On the north side the old houses were later demolished and replaced with new ones set back slightly from the road. Parts of the front walls of the old houses were left to act as retaining walls to the new houses. The furthest of the two new houses served as a police station in the 1950s.



And 30 years later.

Picture taken in about 1934 from a similar position as the card above. New houses have replaced the old cottages. Children of the Farnham family peer over the wall that was once part of the old cottages. Along the street is a motorbike and side-car, possibly Mr Osborne's. This was a popular mode of transport for families at this time with mum clinging on the back of the motorbike and the children or maybe granny in the sidecar! The houses on the right were rebuilt in about 1858 by the Pymore Mill Company for occupation by its workers.



Above, an unused card by Potts of Bridport dating from the early 1900s taken on a sunny summer day from a very similar position as the pictures on the previous page. There is a good gathering of people, outside their own houses. They are mainly women and children so the picture was probably taken on a weekday when the men were at work.



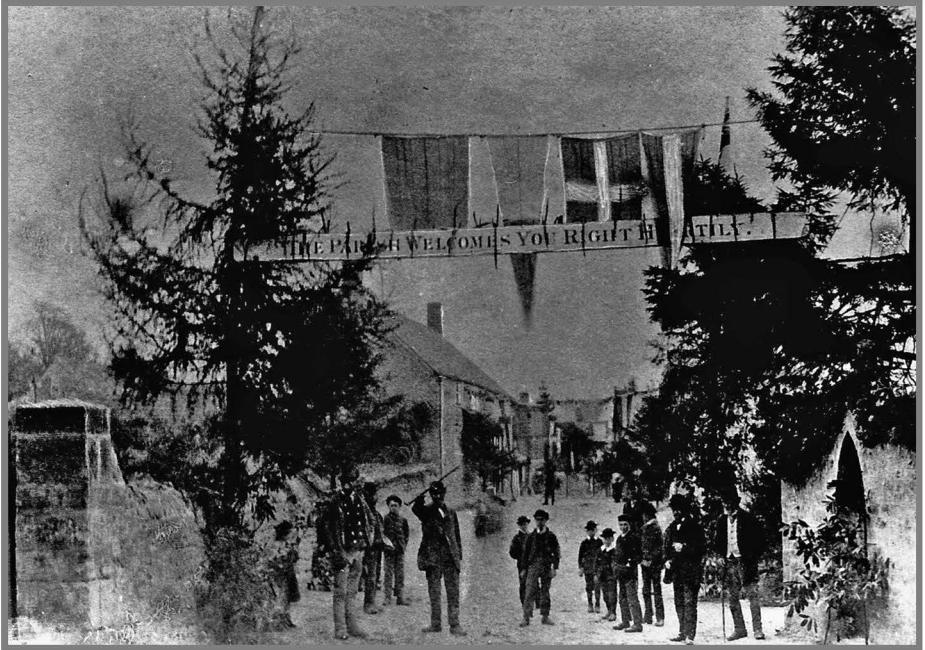
**(left) The 1937 Coronation**

13 May 1937, 28a Lodgers is decorated for the Coronation of King George VI. Kate, Elsie Nellie and Agnes Hansford stand in front of their decorated house.

As mentioned on the previous page, these houses replaced those on the left side of the street in the picture above.



## The Return of the Sir Molyneux and Lady Nepean



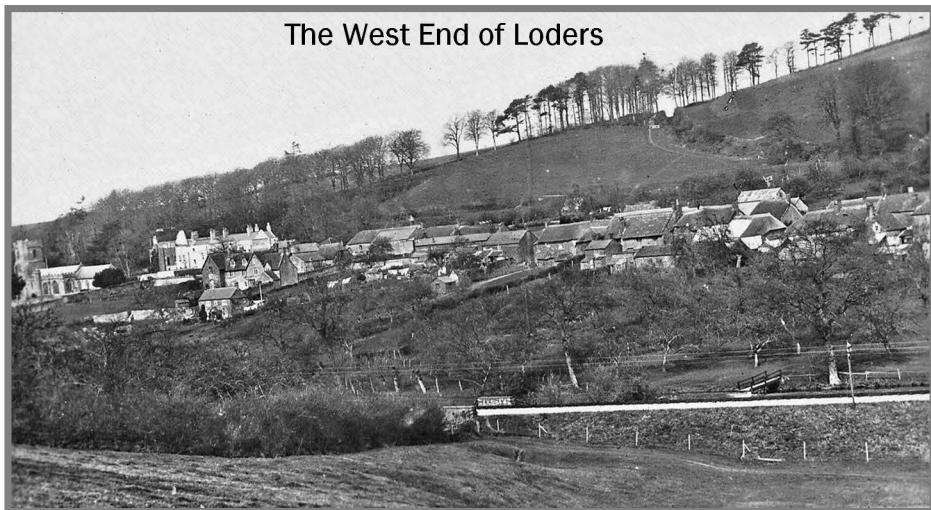
In 1884 the Lord and Lady of the Manor, Sir Molyneux and his wife Lady Nepean returned to Loders Court after an absence of more than four years. The villagers made it clear that they were delighted to see their home-coming. A salute of guns sounded as the Nepean's train steamed through Loders and a second salute welcomed them as their horse-drawn carriage crossed Bradpole Bridge and entered the parish. Children threw flowers over the carriage, the horses were un-harnessed and some of the Nepean's tenants helped by a few villagers pulled the carriage and the two occupants into Loders; back home again.

The Band of Bridport Volunteers led the procession, Sir Molyneux was once its Captain. A crowd of villagers and their children all celebrating the joyous occasion followed. The procession passed through Lower Loders and went as far as Yonderover, turned to escort the Nepean's back to Loders Court.

The report in the Bridport News dated 25 April 1884 describes the scene on the above picture thus:-

*"....There was another banner near the top of the lane, leading to Mr Fooks house and placed there by Mr Fooks, 'THE PARISH WELCOMES YOU RIGHT HEARTILY' and on the other side 'HAPPINESS AND PROSPERITY' ATTEND YOU". Bunting and green branches were also plentiful."*

## The West End of Loders



Published by Hine Bros., Bridport c1910 showing the west end of the village. In the foreground is the Bridport to Maiden Newton Railway. The parapets of the little brick cattle-creep can just about be seen to the right of the bushes. Just beyond the railway is the River Asker with a footbridge crossing into the orchard.

## Loders End



On the corner across the road from Lodgers Court is Lodgers End. Pictured here c1930 with, it is believed, the three Hinks sisters, who lived in the middle of the three cottages. Their father was Coachman for Lady Nepean at the Court. The three sisters attended Lodgers School. Elizabeth went on to teach the infants at the school for 40 years. Edith worked in domestic service in South Africa and Malta before serving Lady Le Breton at the Court for 23 years. Edith and Elizabeth moved to Frome Vauchurch in 1958 to share a bungalow with Mrs Harvey who was once in service with Edith at Lodgers Court.